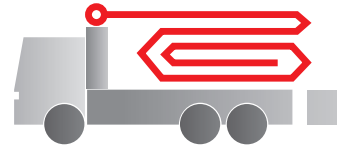


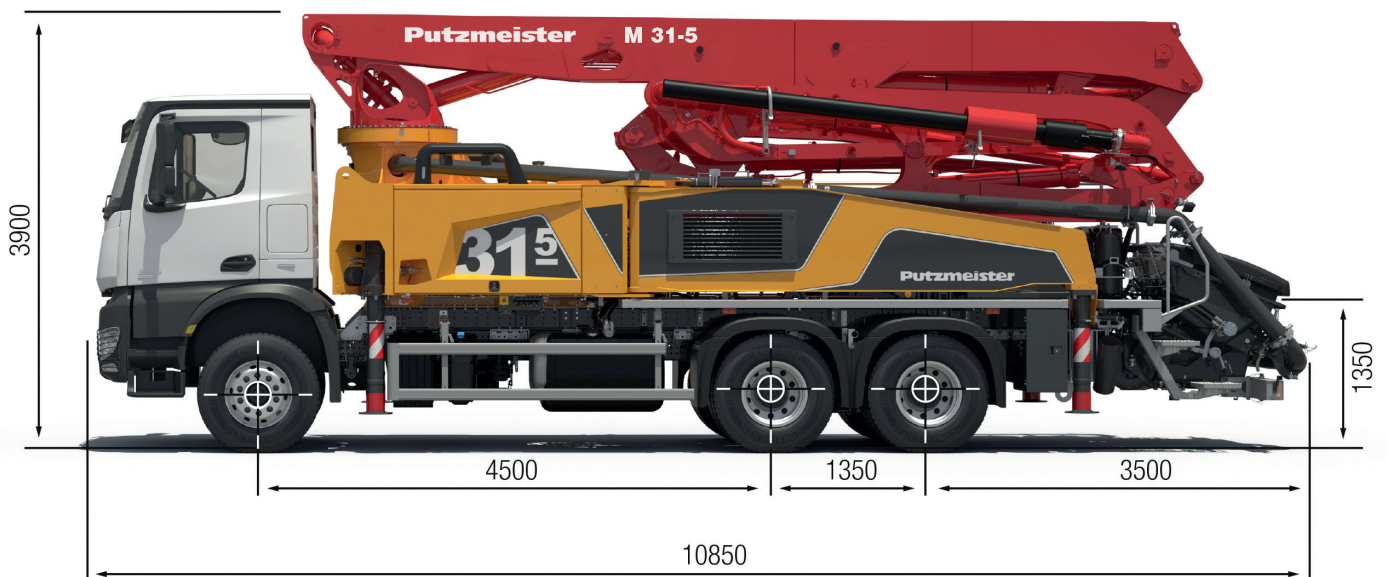
Truck-mounted concrete pump

BSF 31-5.16 H

Output up to 160 m³/h
 Delivery pressure up to 130 bar*



.16 H LS
 .17 I LS



Note: Standard version. Dimensions and weights depend on truck and pump model.
 Dimensions in mm, MB-Actros 3243 as example.
 For illustration only.

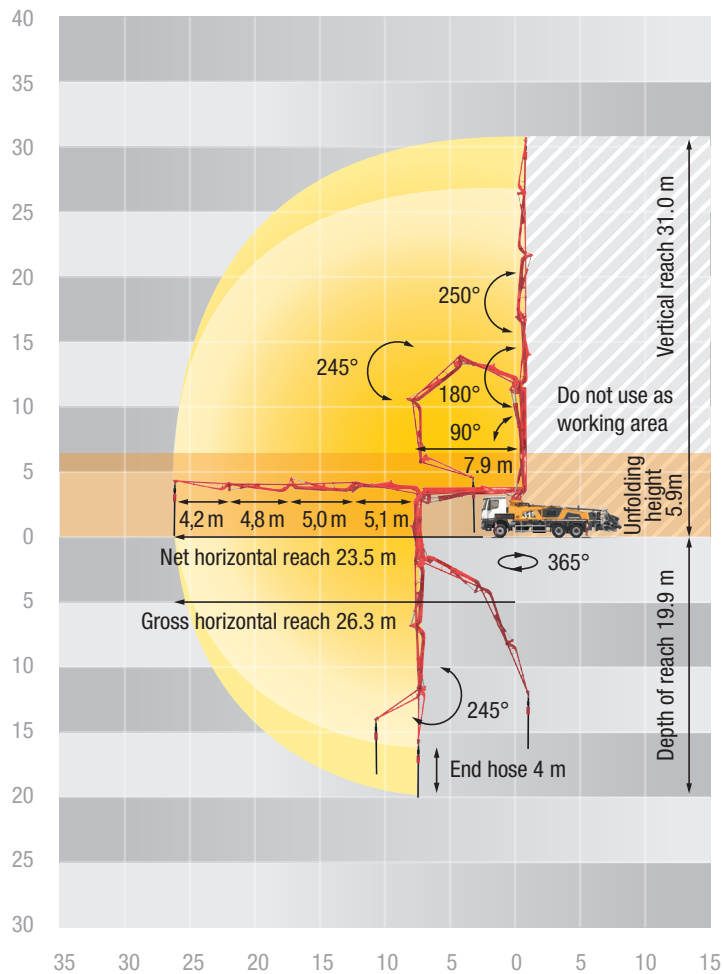
Technical data

| Boom M 31-5 | | |
|------------------|-------|--------|
| Sections | | 5 |
| Reach height | m | 30.5 |
| Horizontal reach | gross | m 26.3 |
| | net | m 23.5 |
| Reach depth max. | m | 20.4 |
| Unfolding height | m | 5.7 |
| End hose length | m | 4 |
| Folding system | | MZR |
| Delivery line | | DN 125 |

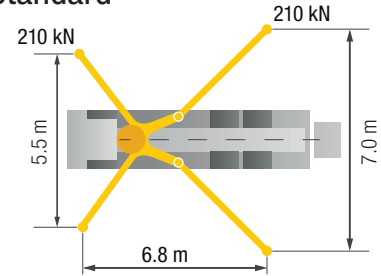
| Pump | | BSF | .16 H | .16 H LS | .17 I LS |
|-------------|-------------------|-------------------|-------|----------|----------|
| Rod side | Output | m ³ /h | 160 | - | - |
| | Delivery pressure | bar | 85 | - | - |
| | Strokes | 1/min. | 31 | - | - |
| Piston side | Output | m ³ /h | 108 | 160 | 170 |
| | Delivery pressure | bar | 130 | 85 | 85 |
| | Strokes | 1/min. | 21 | 26 | 26 |
| | Delivery cylinder | Ø mm | 230 | 250 | 250 |
| | Stroke | mm | 2100 | 2100 | 2100 |

*) Delivery line boom max. 85 bar.
 All data maximum theoretical.

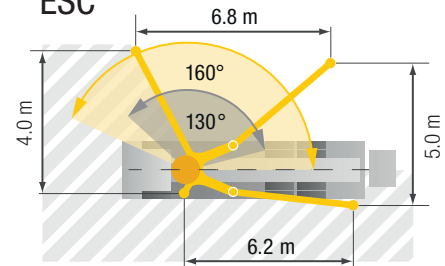
BSF 31-5 Reach information diagram, Support



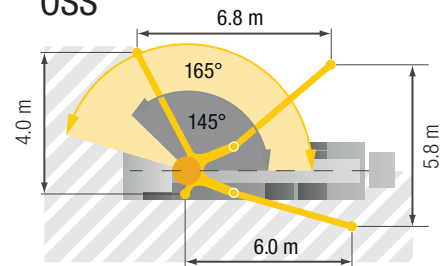
Standard



ESC



OSS



Delivery scope Standard Line

| |
|---|
| Agitator operated via radio and on site |
| Automatic agitator function depending on pump application |
| Bolted I-frame |
| Boom cradle switch with RFID |
| "Boom not on cradle" warning system |
| Box for sponge balls |
| CAN-Bus system |
| Cardan shaft maintenance free |
| Central lubrication hopper, A hinge and 4-point bearing |
| Chassis horn via remote control on hopper |
| Cleaning hose, 10 m, incl. holder and spray nozzle |
| Concrete hopper with agitator |
| Connection for watertank filling |
| Connections for hydraulic emergency supply (boom) |
| Contamination indicator hydraulic oil filter on RGD-RC (Display radio remote control) |
| Deck piping of standard quality |
| Delivery cylinder chrome-plated |
| Delivery line (1-layer) |
| Delivery note-box, plastic |

| |
|--|
| Diagnose interface |
| Elbow (45°) with wear-reducing extended joints |
| End hose 4.0 m DN 125 5.5" |
| Ergonic 2.0 |
| Ergonic Pump System (EPS) incl. Ergonic Output Control (EOC) |
| Ergonomic water hose reel at riser pipe |
| Flushing water pump 160 l/min 25 bar |
| Full support system |
| Hammer and trowel holder |
| Handrail left side, guardrail right side |
| Hinged elbow with cleaning port |
| Hydraulic fluid cooler integrated in the support leg |
| Hydraulic hose for replacement in hose pack |
| LED lighting control sections |
| LED module cabinet lighting to the left and right |
| LED pump/water box lighting |
| LED lighting hopper |
| Operating manuals certified (1 x paper, 1 x CD-ROM), spare part list |
| Operating position by hopper for draining the water line |

| |
|---|
| Painting: 3-coloured Putzmeister standard |
| Platform non-skid |
| Radio remote control with Ergonic Graphic Display (EGD-RC) |
| Rear air port |
| RSA – automatic agitator safety cutout with RFID monitoring and start-up protection |
| Rubber collar on concrete hopper |
| S-transfer tube switchover fast/slow |
| Safety eyebolt for maintenance work on the slewing head |
| Spectacle wear plate DURO 22 |
| Splash guard fixed |
| Step left/right on hopper or underrun guard |
| Support plates (4 x) |
| Swivel support plates |
| Tool set incl. standard equipment |
| Towing eye |
| Wash-out port lid with locked slide pin |
| Water tank 500 l with fill level indicator |
| Water outlet for small amounts on hopper |